

Provisional Components

Sustainable Aesthetics



Provisional Components' Advantages

Ease of Use and Versatility

- Components can be immediately customized to a patient's anatomical profile
- Components are made of polymer material for easy preparation

Prosthetic Flexibility

- Available for implant and abutment-level provisional restorations
- Available in internal and external hex connections

BIOMET **3i** Provisional Components Offer Versatile Solutions For Patients Who Demand More Choices And Faster Results

PreFormance® Provisional Components



QuickBridge® Provisional Components



Provide® Temporary Cylinders



PreFormance Provisional Advantages

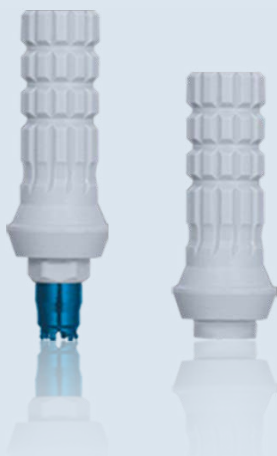
PreFormance Post

- For use with cement-retained restorations
- Available in straight or 15° pre-angled for easy angle correction
- Smooth surface for easy provisional relining
- Flat side for anti-rotation



PreFormance Temporary Cylinder

- Indicated for screw-retained restorations
- Knurled surface for mechanical retention of resin restorative material
- Available in hexed and non-hexed for single or multiple-unit restorations



PreFormance® Provisional Components Case Study

By: Dr. Harold Baumgarten†, Philadelphia, PA

If you seek aesthetic implant level provisional restorations, PreFormance Provisional Components may be customized chairside or at the laboratory for specific contours and anatomic profiles.



Fig. 1

NanoTite™ Certain® Implant in place. The bone was profiled around the interface.



Fig. 2

A PreFormance Post was seated into the implant.



Fig. 3

The PreFormance Post was prepared intraorally to follow the gingival contours.



Fig. 4

The prefabricated crown shell was luted to the PreFormance Post.



Fig. 5

The provisional restoration was fabricated, occlusal and interproximal contacts were checked, adjusted accordingly and delivered to the patient.



Fig. 6

A periapical radiograph was taken of the provisional restoration.

†Dr. Harold Baumgarten has a financial relationship with BIOMET 3i, LLC resulting from speaking engagements, consulting engagements and other retained services.

QuickBridge Provisional Advantages

QuickBridge Provisional Components

- Provide a simple solution for the fabrication of multiple-unit, provisional restorations on definitive Low Profile Abutments
- All components are compatible with straight and angled Low Profile Abutments
- Ability to provisionalize chairside



QuickBridge® Provisional Components Case Study

By: Dr. Pär-Olov Östman†, Falun, Sweden

Clinicians who prefer screw-retained definitive restorations but want the simplicity and cost effectiveness of cement-retained immediate or delayed provisional bridges, may find QuickBridge Provisional Components an ideal choice.



Fig. 1

Conical-shaped screw-retained abutments were placed with 20Ncm.



Fig. 2

QuickBridge Titanium Cylinders were placed.



Fig. 3

QuickBridge PEEK Caps were snapped onto the Titanium Cylinders.



Fig. 4

A provisional restoration was fabricated chairside with a translucent template and Protemp™ 4 Garant (3M, ESPE).

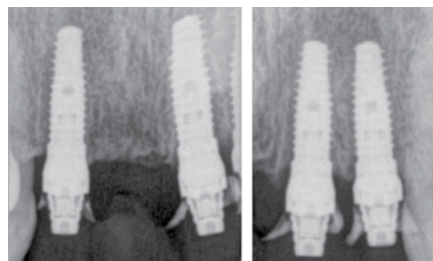


Fig. 7

Postoperative radiographs. Three 15mm (L) NanoTite™ Tapered Implants were placed in the extraction sockets.



Fig. 8

A BellaTek® copymilled definitive prosthesis was fabricated and placed.

†Dr. Pär-Olov Östman has a financial relationship with BIOMET 3i, LLC resulting from speaking engagements, consulting engagements and other retained services.

Provide Abutment Provisional Advantages

Provide Abutment Temporary Cylinders

- Available for single- and multiple-unit restorations
- Contain horizontal grooves for mechanical retention of resin restoration material



Provide® Abutment Temporary Cylinders

By: Dr. Pär-Olov Östman†, Falun, Sweden

Provide Abutment Temporary Cylinders are the answer to an aesthetic abutment-level provisional restoration. Originally, Provide Abutments were available with only a White Protection Snap Cap. Now, the addition of the Provide Temporary Cylinder allows clinicians to fabricate a cement-retained aesthetic provisional restoration.



Fig. 1

NanoTite™ Certain® Implants and Provide Abutments placed. Abutment screws were tightened to 20Ncm. An abutment level impression was then made and a soft-tissue master cast was fabricated.



Fig. 2

Multiple-Unit Provide Abutment Temporary Cylinders were placed onto the Provide Analogs.



Fig. 3

A vacuum-formed template was fabricated, filled with provisional resin restorative material and seated on the Provide Temporary Cylinders.



Fig. 4

Provide Abutment Temporary Cylinders were integrated into the resin material. The provisional restoration was trimmed, polished and returned to the clinician for delivery. The Provide Abutment Temporary Cylinder restoration was delivered with temporary cement.

†Dr. Pär-Olov Östman has a financial relationship with BIOMET 3i, LLC resulting from speaking engagements, consulting engagements and other retained services.

Ordering Information



PreFormance® Post		Certain® Internal Connection		External Hex Connection	
		Straight	Pre-Angled (15°)	Straight	Pre-Angled (15°)
3.4mm	Seating Surface				
3.4mm(D) X 3.8mm(P) X 4.0mm(H)		IMPFP34	IMPAPF34	MPFP34	MPAPF34
3.4mm(D) X 3.8mm(P) X 6.0mm(H)		IMPFP36	IMPAPF36	MPFP36	MPAPF36
3.4mm(D) X 5.0mm(P) X 4.0mm(H)		IMPFP354	IMPAPF354	N/A	N/A
3.4mm(D) X 5.0mm(P) X 6.0mm(H)		IMPFP356	IMPAPF356	N/A	N/A
4.1mm	Seating Surface				
4.1mm(D) X 5.0mm(P) X 4.0mm(H)		IPFP454	IPAPF454	PFP454	PAPF454
4.1mm(D) X 5.0mm(P) X 6.0mm(H)		IPFP456	IPAPF456	PFP456	PAPF456
5.0mm	Seating Surface				
5.0mm(D) X 5.0mm(P) X 4.0mm(H)		IWFPF554	IPAPF554	WPFP554	PAPF554
5.0mm(D) X 5.0mm(P) X 6.0mm(H)		IWFPF556	IPAPF556	WPFP556	PAPF556
6.0mm	Seating Surface				
6.0mm(D) X 6.0mm(P) X 4.0mm(H)		IWFPF664	IPAPF664	WPFP664	PAPF664
6.0mm(D) X 6.0mm(P) X 6.0mm(H)		IWFPF666	IPAPF666	WPFP666	PAPF666

Provide® Abutment Temporary Cylinder



Description	Item No.
4.8mm(P) Single-Unit	PUA48S
4.8mm(P) Multiple-Unit	PUA48M
6.5mm(P) Single-Unit	PUA65S
6.5mm(P) Multiple-Unit	PUA65M

Low Profile Abutment QuickBridge® Provisional Components



Description	Item No.
Cylinder and Cap	LPCQB
Cap	LPCQBCAP



PreFormance Temporary Cylinder	Certain Internal Connection		External Hex Connection	
	Hexed	Non-Hexed	Hexed	Non-Hexed
3.4mm(D) X 3.4mm(P)	IMPFTC34	IMPFTC32	MPFTC34	MPFTC32
4.1mm(D) X 4.1mm(P)	IPFTC41	IPFTC42	PFTC41	PFTC42
5.0mm(D) X 5.0mm(P)	IWPFTC51	IWPFTC52	WPFTC51	WPFTC52
6.0mm(D) X 6.0mm(P)	IWPFTC61	IWPFTC62	WPFTC61	WPFTC62



For More Information, Please Contact Your Local BIOMET 3i Sales Representative.



Global Headquarters
4555 Riverside Drive
Palm Beach Gardens, FL 33410
Toll Free: 1-800-342-5454
Phone: +1-561-776-6700
Fax: +1-561-776-1272
www.biomet3i.com

EC REP BIOMET 3i Dental Ibérica S.L.
EMEA Headquarters
WTC Alameda Park, Ed. 4, Planta 2
C/Tirso de Molina, 40
08940, Cornellà de Llobregat (Barcelona) Spain
Phone: +34-93-470-55-00
Fax: +34-93-371-78-49
www.biomet3i.com

Certain, PreFormance, Provide and QuickBridge are registered trademarks and Providing Solutions – One Patient At A Time and NanoTite are trademarks of BIOMET 3i LLC. ©2016 BIOMET 3i LLC.

All trademarks herein are the property of BIOMET 3i LLC unless otherwise indicated. This material is intended for clinicians only and is NOT intended for patient distribution. This material is not to be redistributed, duplicated or disclosed without the express written consent of BIOMET 3i. For additional product information, including indications, contraindications, warnings, precautions and potential adverse effects, see the product package insert and the BIOMET 3i Website. For instructions go to: www.ifu.biomet3i.com.



ART1018
REV D 02/16