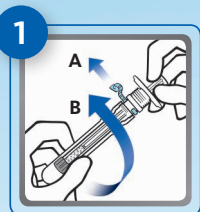
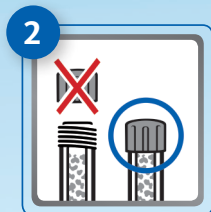


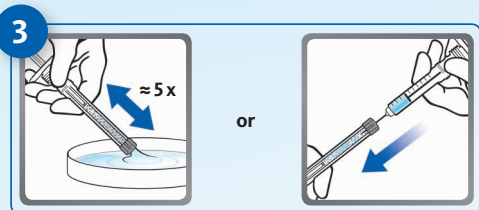
Ready for use in just a few steps



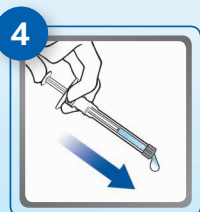
1. Holding the Geistlich Bio-Oss Pen® firmly, tear off the protective seal (A) and unscrew the protection cap (B).



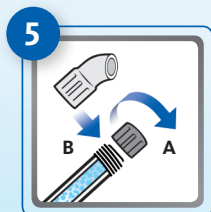
2. Do **not** remove the red/green filter cap from the Geistlich Bio-Oss Pen® at this step.



3. Place the filter cap into sterile physiological saline solution or patient blood. Pull back and press down the plunger several times until Geistlich Bio-Oss® is completely moistened. Alternatively, use a syringe (not included) to inject saline or blood directly through the filter cap.



4. Gently press the plunger to eject any excess fluid.



5. Replace the filter cap (A) with the curved applicator tip (B). Now apply Geistlich Bio-Oss® directly to the surgical site.

Geistlich
Biomaterials

Geistlich
Bio-Oss Pen®

Nothing changed.
Just improved.



Geistlich Bio-Oss Pen®

Small granules 0.25 mm – 1 mm

Available sizes:

0.25 g ≈ 0.5 cc

0.5 g ≈ 1.0 cc



Large granules 1 mm – 2 mm

Available sizes:

0.5 g ≈ 1.5 cc



For more
information visit:
www.bio-oss.com



315901/1212/en

Subsidiary Great Britain, Ireland:

Geistlich Sons Limited
1st Floor, Thorley House
Bailey Lane, Manchester Airport
GB-Manchester M90 4AB
Phone +44-161 490 2038
Fax +44-161 498 6988
www.geistlich.co.uk

Manufacturer:

Geistlich Pharma AG
Business Unit Biomaterials
Bahnhofstrasse 40
CH-6110 Wolhusen
Phone +41-414925555
Fax +41-414925639
www.geistlich-pharma.com

swiss made



✓ Unwrap
✓ Moisten
✓ Use

9 out of 10
dentists are convinced
the Geistlich Bio-Oss Pen®
handles well*

LEADING REGENERATION

LEADING REGENERATION

9 out of 10 dentists are convinced the Geistlich Bio-Oss Pen® handles well*

The Geistlich Bio-Oss Pen® is a combination of improved handling and the proven No. 1 bone substitute material^{1,2} Geistlich Bio-Oss®, which is known worldwide for its unequalled record of clinical success.

* Geistlich Pharma AG practice test, June 2012

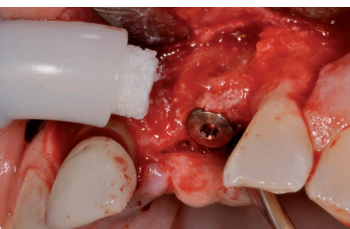
Applied in many indications, such as



Case: Dr. Patrice Imbert, France

Lateral sinus floor elevation and larger bone defects

Geistlich Bio-Oss Pen® with large granules is recommended for larger augmentations and for sinus floor elevations.



Case: Dr. Thomas Zumstein,
Switzerland

Small defects

Geistlich Bio-Oss Pen® with small granules is recommended for smaller bony defects. Small granules ensure closer contact with the surrounding bony walls.

The Geistlich Bio-Oss Pen® is user friendly*

89% rated the applicator as user-friendly

Easy moistening*

89% of the dentists found moistening the granules to be simple



Excellent consistency*

89% perceived the consistency of Geistlich Bio-Oss® as "good" and "very good" after expelling the excess fluid

¹ iData Research Inc., US Dental Bone Graft Substitutes and other Biomaterials Market, 2011.

² iData Research Inc., European Dental Bone Graft Substitutes and other Biomaterials Market, 2012.