

The Original leads  
to the top.

2012

1996

Long-term  
results of  
12–14 years<sup>1</sup>

Geistlich Bio-Gide® –  
The Original



# The Original leads to the top.

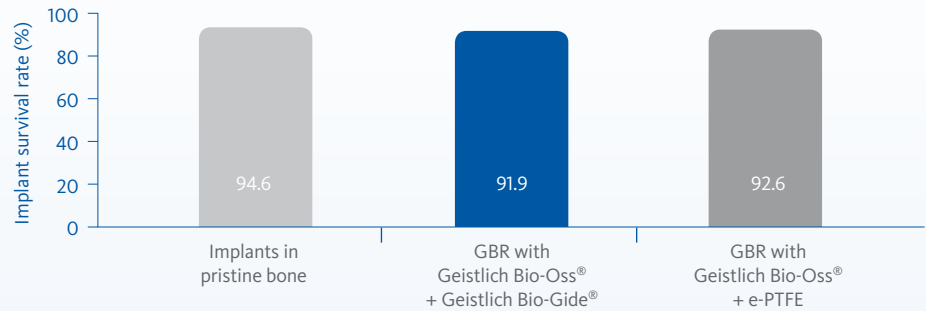


**RELIABLE:**  
Since 16 years.  
Over 190 studies.<sup>8</sup>

# 2012 Clinical results of 12–14 years with Geistlich Bio-Gide® (GBR technique)<sup>1</sup>

## Long-term survival rates proven equivalent among implants placed with GBR or in pristine bone.<sup>1</sup>

The implant survival rate after GBR with Geistlich Bio-Oss® and Geistlich Bio-Gide® does not differ significantly from the survival rate of implants placed in pristine bone.<sup>1</sup>



## The GBR technique used in this long-term study<sup>1</sup> is the GBR method of choice today<sup>9</sup>

(recent case Dr. Ramel, University of Zurich, Switzerland)



A buccal bone dehiscence is visible after implant positioning.



The defect is filled with Geistlich Bio-Oss® Collagen.

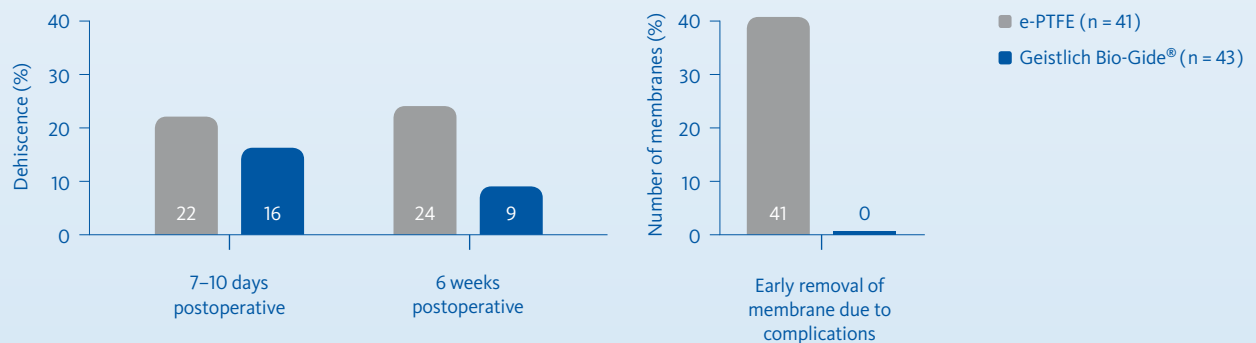


The augmentation is covered with Geistlich Bio-Gide®.



Good soft-tissue healing and optimal contour over the abutment four months post-operatively.

## Geistlich Bio-Gide® compared to e-PTFE: same long-term success<sup>1</sup> – fewer complications<sup>6</sup>



### References

- Jung RE et al., Clin. Oral Implants Res. 2012; Jun 15 (Epub ahead of print)
- Becker J et al., Clin. Oral Implants Res. 2009; 20(7):742-749
- Tal H et al., Clin. Oral Implants Res. 2008; 19(3):295-302
- Wallace SS et al., Int J Periodontics Restorative Dent. 2005; 25(6):551-559

<sup>5</sup> Zitzmann NU et al., Int J Oral Maxillofac Implants. 2001; 16(3):355-66

<sup>6</sup> Zitzmann NU et al., Int J Oral Maxillofac Implants. 1997; 12(6):844-852

<sup>7</sup> Data on file

<sup>8</sup> Pubmed October 2012. Search term „Bio-Gide“

<sup>9</sup> Ramel CF et al., Int J Oral Maxillofac Implants. 2012 Mar–Apr; 27(2):435-441

## Product range



**Geistlich Bio-Gide®**  
Resorbable bilayer membrane

Available sizes:  
25 mm x 25 mm  
30 mm x 40 mm



**Geistlich Bio-Gide® Perio**  
Resorbable bilayer membrane  
with sterile templates

Available size:  
16 mm x 22 mm



**Perio-System Combi-Pack**  
Geistlich Bio-Gide® Perio  
16 x 22 mm  
Geistlich Bio-Oss® Collagen  
100 mg



**Geistlich Bio-Oss®**  
Spongius bone substitute  
Small granules 0.25 mm – 1 mm

Available sizes:  
0,25 g = 0,5 cm<sup>3</sup>  
0,5 g = 1 cm<sup>3</sup>  
2 g = 4 cm<sup>3</sup>



**Geistlich Bio-Oss®**  
Spongius bone substitute  
Large granules 1 mm – 2 mm

Available sizes:  
0,5 g = 1,5 cm<sup>3</sup>  
2 g = 6 cm<sup>3</sup>



**Geistlich Bio-Oss® Collagen**  
Spongius bone substitute  
Preformed block with collagen

Available sizes:  
100 mg  
250 mg



**Geistlich Combi-Kit Collagen**  
Geistlich Bio-Oss® Collagen  
100 mg  
Geistlich Bio-Gide®  
16 x 22 mm



**Geistlich Bio-Oss Pen®**

Granule size: 0.25 mm – 1 mm  
Available sizes:  
0.25 g = 0.5 cc  
0.5 g = 1.0 cc

Granule size: 1 mm – 2 mm  
Available sizes:  
0.5 g = 1.5 cc

 swiss made

**Manufacturer:**  
Geistlich Pharma AG  
Business Unit Biomaterials  
Bahnhofstrasse 40  
CH-6110 Wolhusen  
Phone +41-414925630  
[www.geistlich-pharma.com](http://www.geistlich-pharma.com)  
[www.bio-gide.com](http://www.bio-gide.com)

**Subsidiary Great Britain, Ireland**  
Geistlich Sons Limited  
1<sup>st</sup> Floor, Thorley House  
Bailey Lane  
Manchester Airport  
GB-Manchester M90 4AB  
Phone +44 1 614 902 038  
[www.geistlich.co.uk](http://www.geistlich.co.uk)

More details about our distribution partners:  
[www.geistlich-pharma.com/mycontact](http://www.geistlich-pharma.com/mycontact)